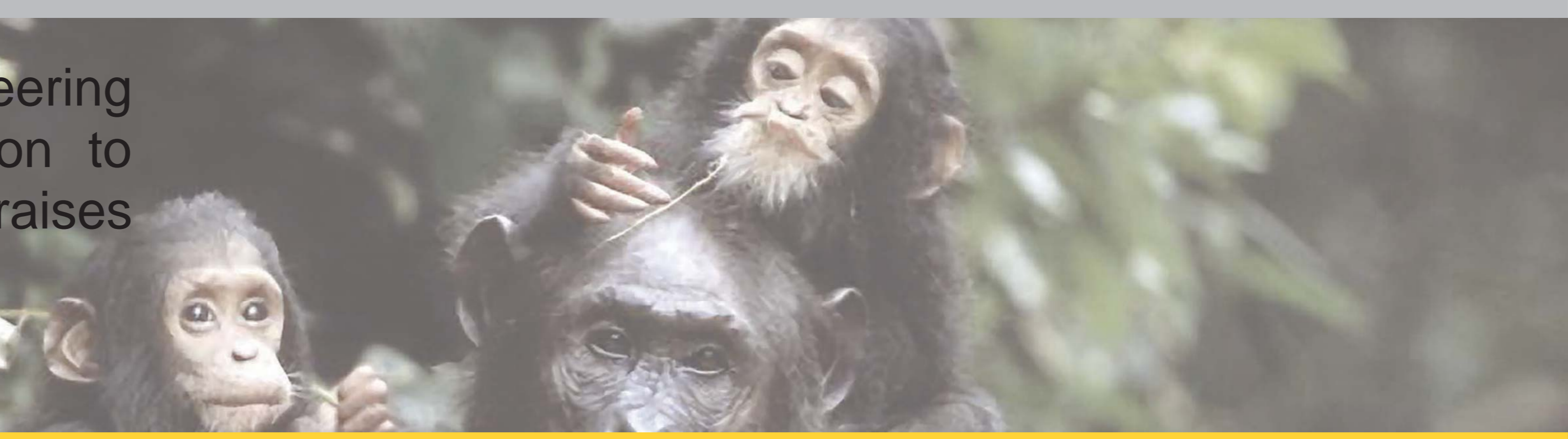


Overview of Jane Goodall Institute scientific research and approach to conservation

Daniela de Donno^a, Debby Cox^b, Liliana Pacheco^c, Lilian Pintea^b, Shawn Sweeney^b

^aJGI-Italy; ^bJGI- U.S.A.; ^cJGI- Spain - Special thanks to Dr. Anthony Collins - Gombe Stream Research Centre

The Jane Goodall Institute (JGI) continues Dr. Jane Goodall's pioneering research with wild chimpanzees, advances innovative conservation to protect forest ecosystems across the chimpanzee range and raises awareness about everyday actions that impact our planet.
Ensuring great apes survival in the wild is a JGI priority.



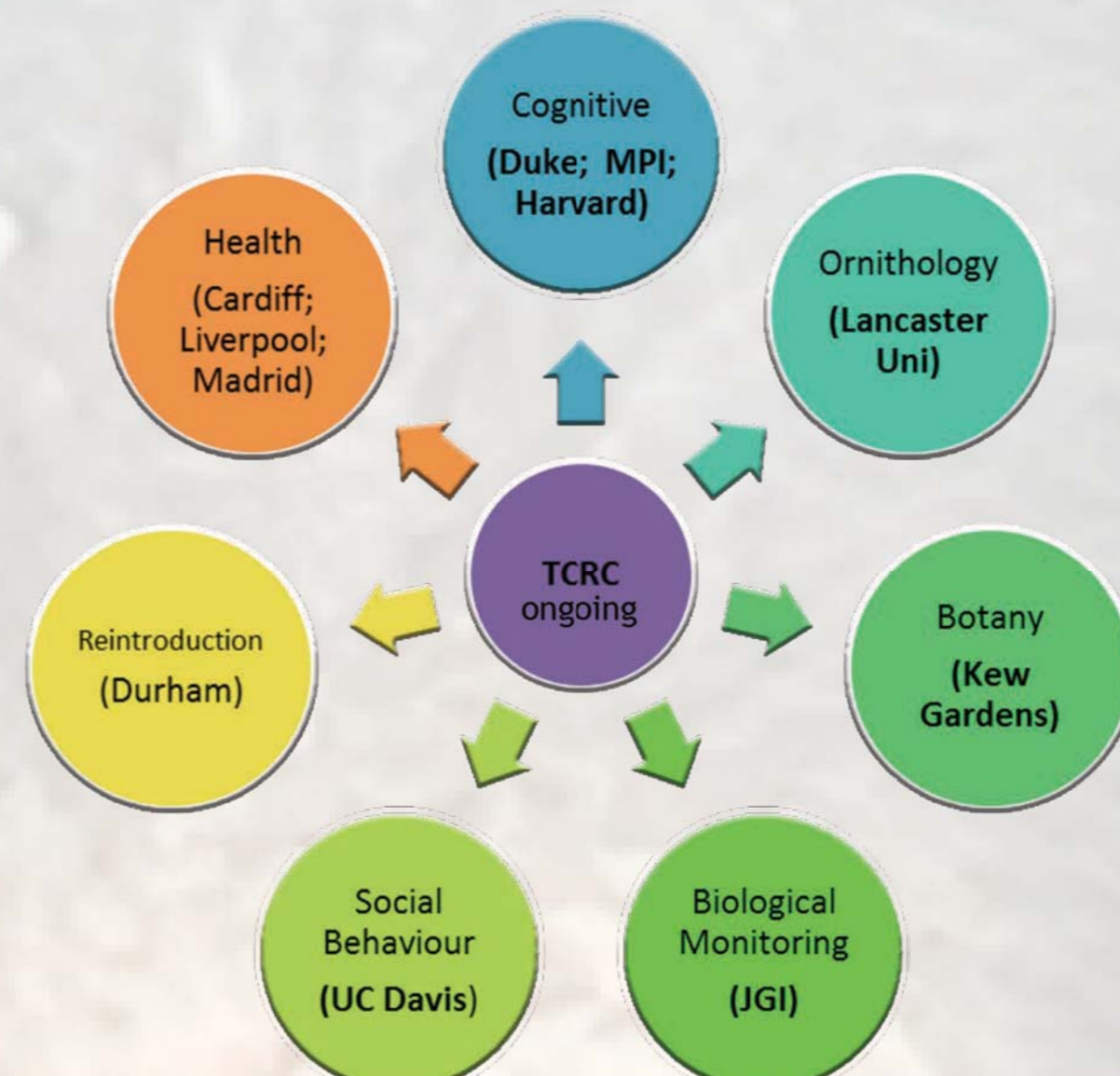
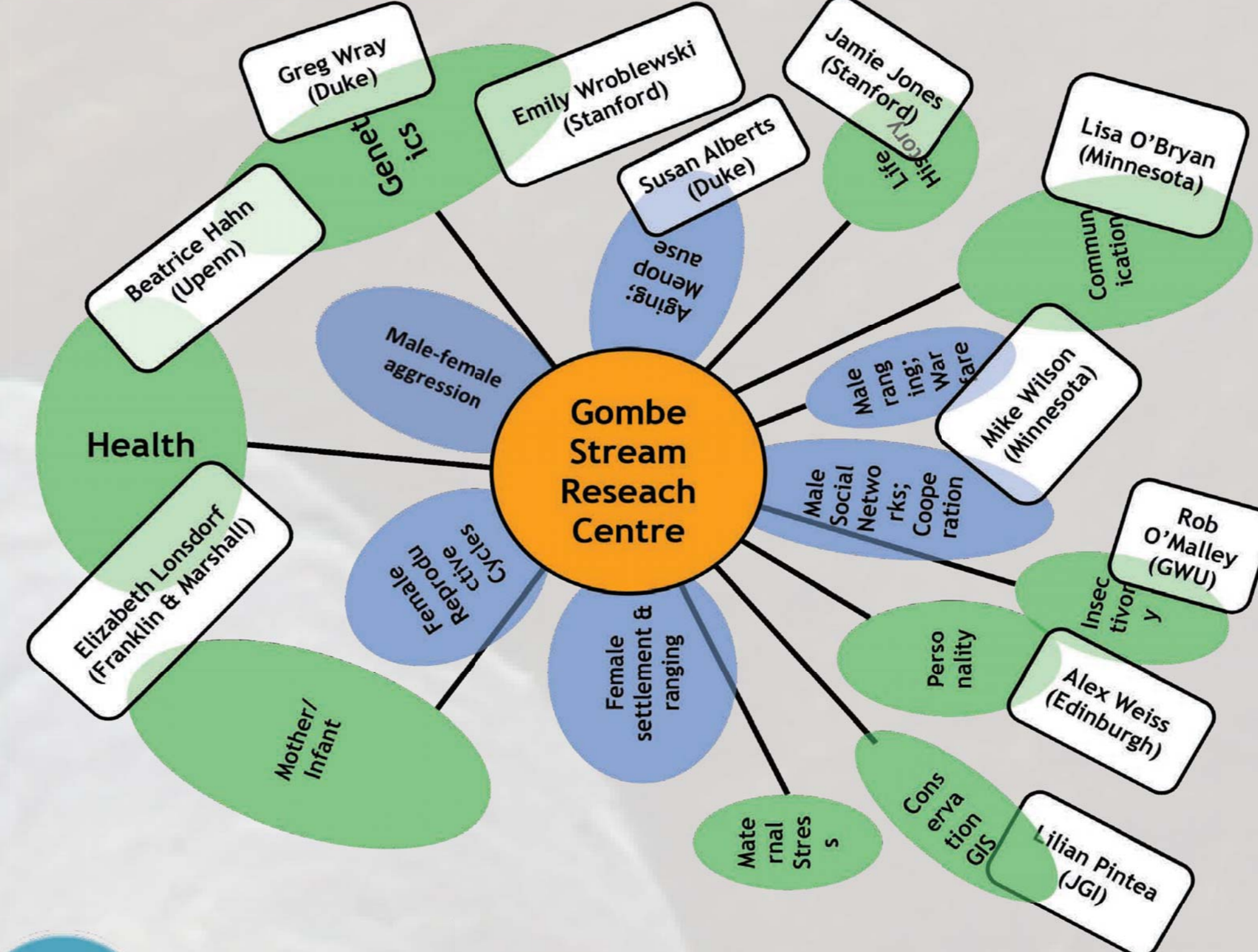
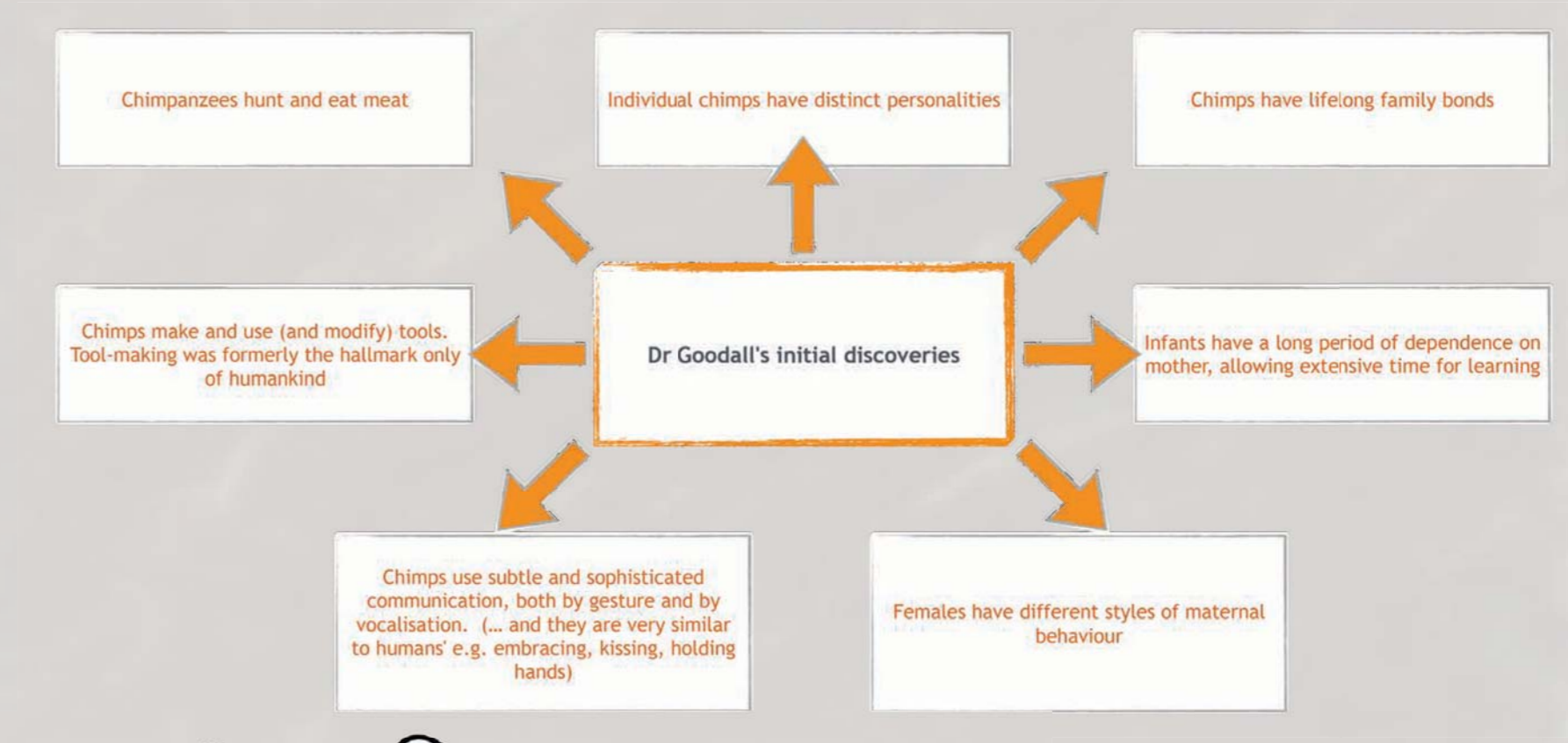
WILDLIFE RESEARCH

Gombe Stream Research Center (GSRC) is the longest ongoing field research site for great apes in the world. The year 2015 marks 55 years of continuous study on three communities of chimpanzees in a single population. With the long-term data collected at Gombe we have a more comprehensive assessment of chimpanzee ecology, and we can better understand interactions among their communities as well as between populations of humans and chimpanzees. GSRC continues to provide a platform for scientists from around the globe to advance research and global understanding of chimpanzee behavior which ultimately drives more effective conservation.

438 PUBLICATIONS INCLUDING THESE
 37 Ph.D THESES and 2 MASTER THESES
 320 NAMED CHIMPANZEES IN KASEKELA AND MITUMBA COMMUNITIES

Expanding across the chimpanzee range, including Tanzania, Uganda, the Democratic Republic of Congo, the Republic of Congo, Senegal and Gabon JGI's efforts are also informed by a variety of scientific disciplines, including aging, human evolution, ethology, anthropology, behavioral psychology, sociology, conservation biology, disease transmission (including noninvasive studies on HIV/AIDS), population biology, forest ecology, botany, ornithology, landscape ecology, Geographic Information Systems, and remote sensing which also leverage advances in mobile and cloud based mapping technology.

JGI's Tchimpounga Chimpanzee Rehabilitation Center, for example in the Republic of Congo cares for more than 150 chimpanzees, and has served as an important site for cognitive, physiological, behavioral, genetic, epidemiological, parasitological studies that have all been carried out at this center to understand more about chimpanzees and how to protect them.



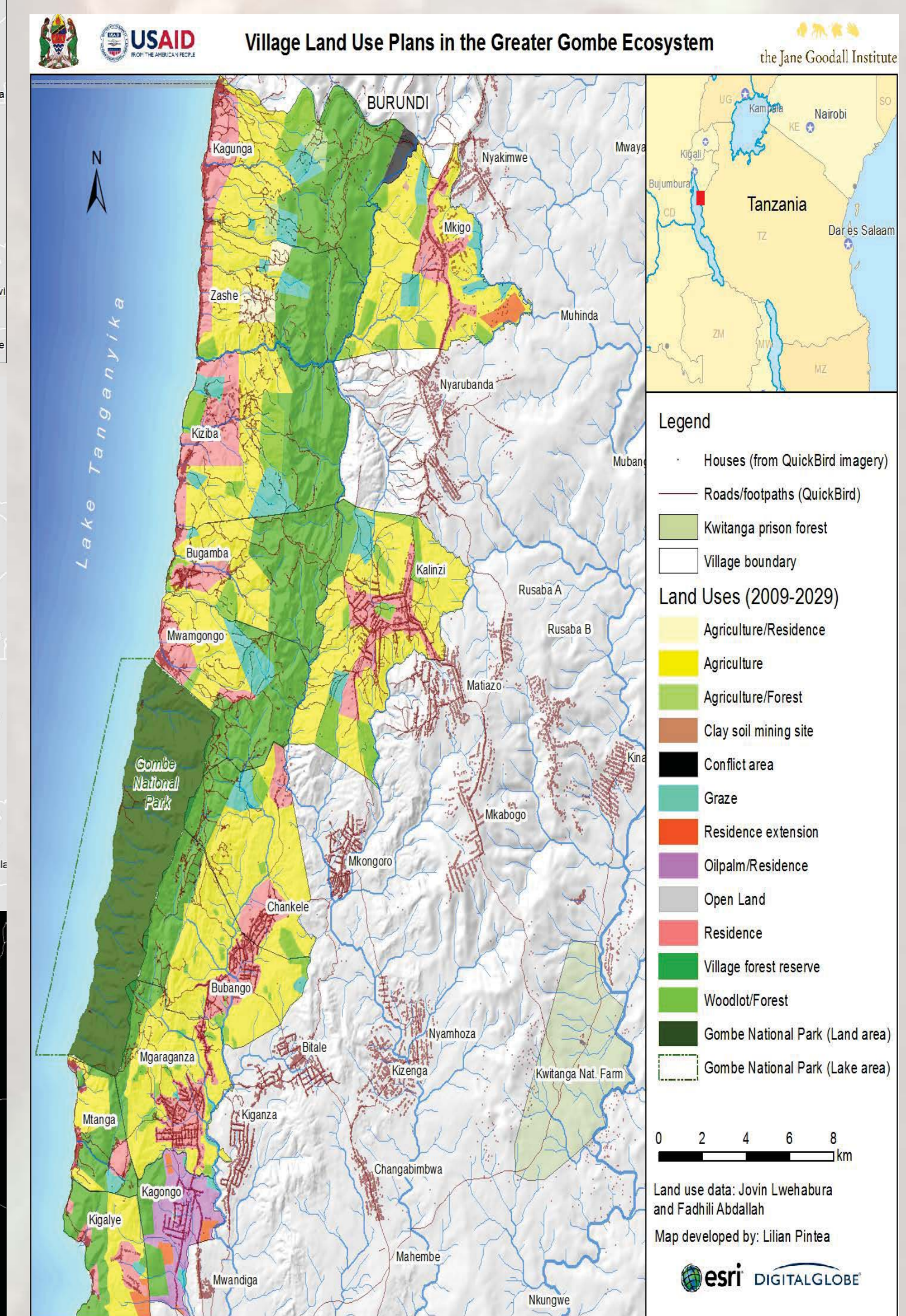
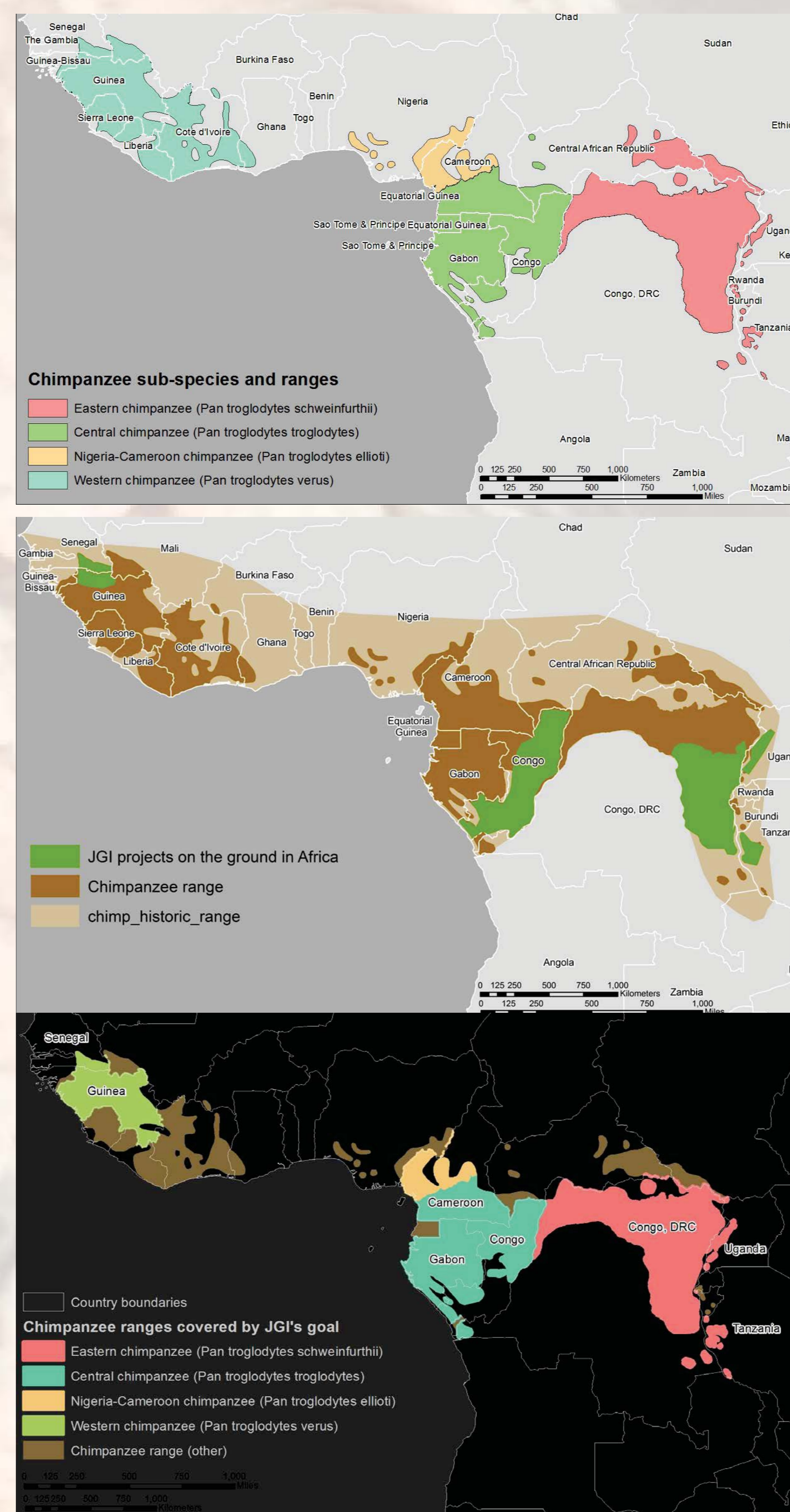
CONSERVATION

JGI undertakes habitat monitoring across the entire chimpanzee range. Over the next 30 years, JGI endeavors to protect 85% of remaining chimpanzees and their habitats. JGI has recognized that protecting a species and their habitats for the long term cannot be separated from the task of improving the human condition.

Using a holistic approach, informed strategically by the use of the Open Standards for the Practice of Conservation to plan and implement conservation actions has enabled JGI projects to make positive impact on both the human and chimpanzee populations in across the Congo basin and beyond.

JGI's programmes fall into four primary programmes including: protecting great Apes from diseases and trafficking; promoting sustainable livelihoods; improving gender and health outcomes, and assuring healthy habitats. This holistic approach includes caring for confiscated chimpanzees, honoring Dr. Goodall's core value that all individuals matter. JGI's Tchimpounga Chimpanzees Rehabilitation Center (TCRC) in Congo is the largest of its kind in Africa, providing care for more than 150 chimpanzees many of whom are victims of the illegal commercial bush meat and pet trade.

The Sanctuary is also home to other species of primates including mandrills and moustached moneys.



EDUCATION

Jane Goodall's Roots & Shoots is the youth-led community action and learning program of the Jane Goodall Institute. The program builds on the legacy and vision of Dr. Jane Goodall to place the power and responsibility for creating community-based solutions to big challenges in the hands of the young people. Through the program, young people map their community to identify specific challenges their neighborhoods face. From there, they prioritize the problems, develop a plan for a solution, and take action. Roots&Shoots methodology favors the use of the scientific method among youth.

Roots & Shoots groups carry out locally and globally-based service projects in a variety of places all over the world. These groups get to address the issues that they think are relevant in their area, involving the human community, the animal community, or the environment. Roots & Shoots projects have included everything from tree planting, beekeeping, and habitat beautification, to fairs and festivals, education, and community trips.

We are at 138 countries